

„easyCPA-Alarm“  
Manual / Handbuch  
English / German

easyCPA-Alarm  
Product #: Ao52  
“External Signal Source for CPA Indication in  
conjunction with the use of easyTRX2 or easyTRX2-IS”

easyCPA-Alarm  
Produkt Nr.: Ao52  
„Externer Signalgeber für CPA-Funktion  
des easyTRX2/TRX2-IS Transceivers“

Stand 2.0

Weatherdock AG.  
Sigmundstraße 180  
D-90431 Nürnberg  
Tel. :+49 911 37 66 38 30  
Fax: +49 911 37 66 38 40  
[www.weatherdock.com](http://www.weatherdock.com)  
Email: [info@weatherdock.de](mailto:info@weatherdock.de)



## PLEASE READ THIS FIRST!

### WEATHERDOCK GENERAL WARNINGS

All marine Automatic Identification System (AIS) units utilize a satellite based system such as the Global Positioning Satellite (GPS) network or the Global Navigation Satellite System (GLONASS) network to determine position. The accuracy of these networks is variable and is affected by factors such as the antenna positioning, how many satellites are used to determine a position and how long satellite information has been received for. It is desirable wherever possible therefore to verify both your vessels AIS derived position data and other vessels AIS derived position data with visual or radar based observations. The easyTRX2 software is intended for use as an installation and configuration tool. The application is not a navigation tool and should not be used as such.

### LICENSING

**IMPORTANT:** In most countries the operation of an AIS unit is included under the vessels marine VHF license provisions. The vessel on to which the AIS unit is to installed must therefore possess a current VHF radiotelephone license which lists the AIS system and the vessel Call Sign and MMSI number. Please contact the relevant authority in your country for more information. In accordance with a policy of continual development and product improvement the easyTRX2 hardware and software may be upgraded from time to time and future versions of the easyTRX2 may therefore not correspond exactly with this manual. When necessary upgrades to the product will be accompanied by updates or addenda to this manual. Please take time to read this manual carefully and to understand its contents fully so that you can install and operate your AIS system correctly. Information contained in this manual is liable to change without notice. Weatherdock AG, disclaims any liability for consequences arising from omissions or inaccuracies in this manual and any other documentation provided with this product.

### DISCLAIMER

THIS SOFTWARE IS PROVIDED BY THE COPYRIGHT HOLDERS AND CONTRIBUTORS "AS IS" AND ANY EXPRESS OR IMPLIED WARRANTIES, INCLUDING, BUT NOT LIMITED TO, THE IMPLIED WARRANTIES OF MERCHANTABILITY AND FITNESS FOR A PARTICULAR PURPOSE ARE DISCLAIMED. IN NO EVENT SHALL THE COPYRIGHT OWNER OR CONTRIBUTORS BE LIABLE FOR ANY DIRECT, INDIRECT, INCIDENTAL, SPECIAL, EXEMPLARY, OR CONSEQUENTIAL DAMAGES (INCLUDING, BUT NOT LIMITED TO, PROCUREMENT OF SUBSTITUTE GOODS OR SERVICES; LOSS OF USE,

DATA, OR PROFITS; OR BUSINESS INTERRUPTION) HOWEVER CAUSED AND ON ANY THEORY OF LIABILITY, WHETHER IN CONTRACT, STRICT LIABILITY, OR TORT (INCLUDING NEGLIGENCE OR OTHERWISE) ARISING IN ANY WAY OUT OF THE USE OF THIS SOFTWARE, EVEN IF ADVISED OF THE POSSIBILITY OF SUCH DAMAGE.

## WARNINGS AND PRECAUTIONS

IF YOU CHOOSE TO USE THE CPA-ALARM, THE EASYTRX<sub>2</sub> OR THE EASYSPLIT OR BOTH IN Y BOAT; IT IS THE SOLE RESPONSIBILITY OF THE OWNER/OPERATOR OF THE EASYCPA-A-LARM; THE EASYTRX<sub>2</sub> (AND OR THE EASYSPLIT) TO SECURE THE BOAT SO THAT IT WILL NOT CAUSE ANY DAMAGE OR PERSONAL INJURY IN THE EVENT OF AN ACCIDENT.

## SOME VESSELS DO NOT CARRY AIS.

**IT IS IMPORTANT AT ALL TIME TO KEEP A PROPER LOOKOUT.  
NEITHER THE "easyCPA-Alarm", the "easyTRX<sub>2</sub>" NOR (AND OR)  
"easySPLIT" ARE NOT A SUBSTITUTE FOR GOOD SEAMANSHIP.**

This software uses components and source code developed by other companies or groups.

Microsoft .Net Framework V2.0: Copyright © 2005 Microsoft Corporation

All trademarks mentioned in this document are the property of their respective owners.

Copyright © 2006, Weatherdock AG.

**Copying of this document, and giving it to others and the use or communication of the contents thereof, are forbidden without express authority. Offenders are liable to the payment of damages.**

**Sin nuestra expresa autorización, queda terminantemente prohibida la reproducción total o parcial de este documento, así como su uso indebido y/o su exhibición o comunicación a terceros. De los infractores se exigirá el correspondiente resarcimiento de daños y perjuicios.**

Pos	Date	New version	Author	Description of change
1	19.01.2011	1.0	Knipp	Basic
2	28.7.2011	2	Kotoucsek	Formatting, sketches

# TABLE OF CONTENTS / INHALT

<b>PREREQUISITES</b>	<b>5</b>
<b>1. SCOPE OF DELIVERY</b>	<b>5</b>
<b>2. MOUNTING AND INSTALLATION</b>	<b>6</b>
2.1. INSTRUCTION	6
2.2. MECHANIC AND ELECTRIC INSTALLATION	7
2.2.1. <i>Mounting</i>	7
<b>3. STARTING UP</b>	<b>10</b>
<b>4. TROUBLESHOOTING</b>	<b>11</b>
<b>5. MAINTANANCE</b>	<b>12</b>
<b>6. CONTACT AND SUPPORT INFORMATION</b>	<b>12</b>
<b>7. WARRANTY</b>	<b>13</b>
<b>8. INDEX</b>	<b>14</b>
<b>9. DEUTSCH</b>	FEHLER! TEXTMARKE NICHT DEFINIERT.
<b>10. LIEFERUMFANG</b>	FEHLER! TEXTMARKE NICHT DEFINIERT.
<b>11. MONTAGE UND INSTALLATION</b>	FEHLER! TEXTMARKE NICHT DEFINIERT.
11.1. MECHANISCHER UND ELEKTRISCHER ANSCHLUß - EMPFEHLUNGEN	<b>FEHLER!</b>
TEXTMARKE NICHT DEFINIERT.	
11.1.1. <i>Montage:</i>	<b>Fehler! Textmarke nicht definiert.</b>
<b>12. INBETRIEBNAHME DES EASYCPA-ALARM</b>	FEHLER! TEXTMARKE NICHT DEFINIERT.
<b>13. FEHLERBEHEBUNG</b>	FEHLER! TEXTMARKE NICHT DEFINIERT.
<b>14. WARTUNG</b>	FEHLER! TEXTMARKE NICHT DEFINIERT.
<b>15. KONTAKT UND PRODUKTUNTERSTÜTZUNG</b>	FEHLER! TEXTMARKE NICHT DEFINIERT.

**16. LIZENZVEREINBARUNG**

FEHLER! TEXTMARKE NICHT DEFINIERT.

**17. GEWÄHRLEISTUNG**

FEHLER! TEXTMARKE NICHT DEFINIERT.

**Congratulations!**

Thanks to purchase a unit from the Weatherdock AG. This testifies your high technical competence, because you purchased the best available product on the market. Thank you.

**PREREQUISITES**

The easyTRX2 programming application is designed to operate with Microsoft Windows® 2000 (SP 3), XP (SP 2) and above. Recommended minimum system requirements are:

- Microsoft Windows® 2000 SP3 or Microsoft Windows® XP SP2
- Display resolution of at least 1024 x 768
- One USB port
- A pointing device (mouse or equivalent)

## **1. SCOPE OF DELIVERY**

In the carton there is contained:

- The easyCPA-Alarm
- The cable brown and white to connect the device with the easyTRX2 or the TRX2-IS
- This manual



## 2. MOUNTING AND INSTALLATION

### 2.1. Instruction

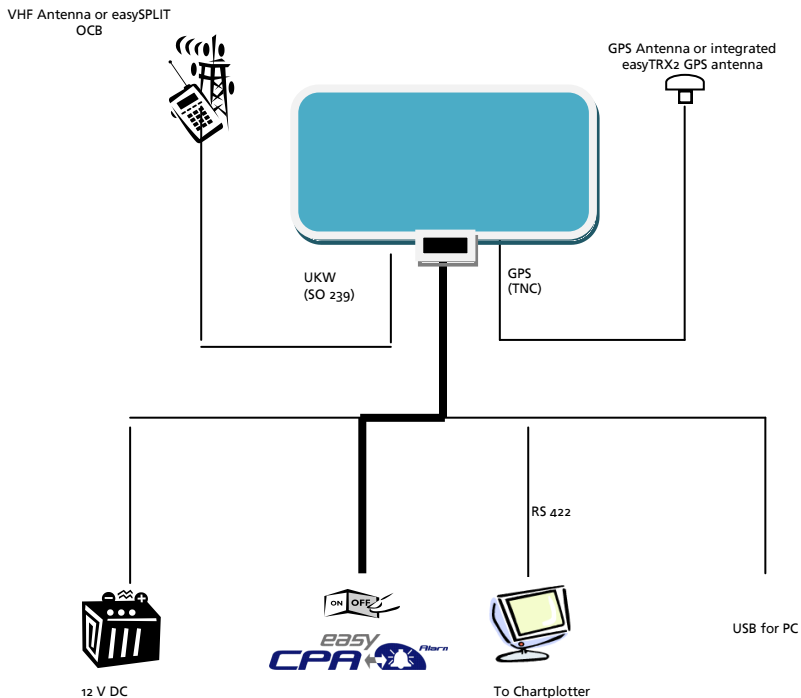
- you have to connect the easyCPA-Alarm with the easyTRX2 or easyTRX2-IS as followed
  - connect the brown cable of TRX2 to the brown of CPA-Box and the white cable of the eastRX2 or easyTRX2-IS to the white cable.

## 2.2. Mechanic and electric installation

### 2.2.1. Mounting

The schematics of the mounting please take out of the following sketches:

Please place the easyCPA-Alarm out of intensive sunlight and water contact.





Schematics for the easyCPA-Alarm connection

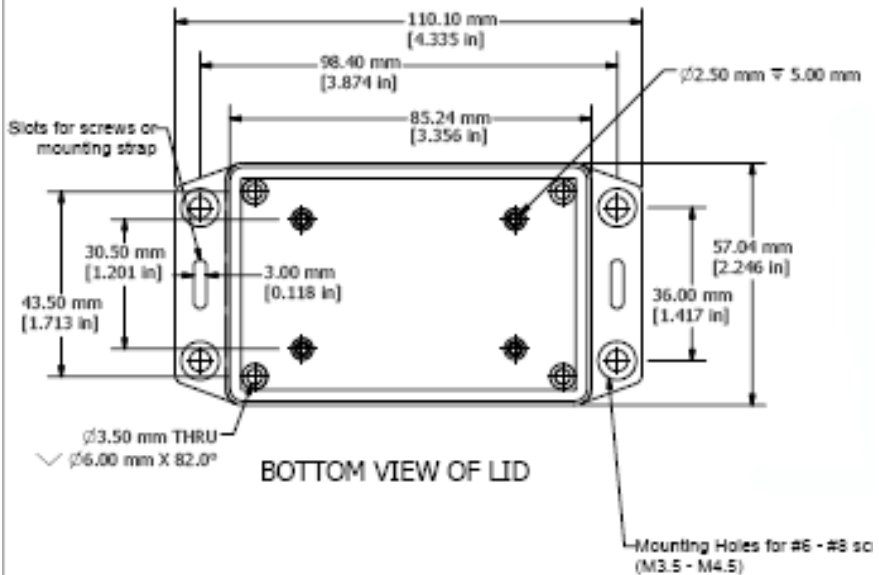
## Cable colours:

The easyTRX2 is connected to the PC by means of a USB plug. The USB cable is enclosed the the box.

If you want to connect the easyTRX2 to a chartplotter please use the 6-pole cable, marked with NMEA. You need two cables. The white one has to be connected to the NMEA data input of the chartplotter, the green one to the NMEA ground of the input. For the cable connection schematics please look at following table:

Pos	Cable group	Quantity of cables	Final wire colour	Functionality	Pin at Sub D 15
1	NMEA	6	green	NMEA out 38400, (-)	9
2	NMEA		white	NMEA out 38400, (+)	1
3	NMEA		pink-coloured	NMEA in 38400, (-)	10
4	NMEA		grey	NMEA in 38400, (+)	2
5	NMEA		Brown	NMEA in 4800, (-)	11
6	NMEA		Yellow	NMEA in 4800, (+)	3
7	External switches	4	green	SRM switch (-)	13
8	External switches		white	SRM switch (+)	5
9	External switches		brown	Silent switch (-)	12
10	External switches		yellow	Silent switch (+)	4
11	CPA 	2	brown	CPA Alarm (-)	14
12	CPA 		white	CPA Alarm (+)	6
13	Power	2	black	Power 9.6-31.2 VDC (-)	/.
14	Power		red	Power 9.6-31.2 VDC (+)	/.



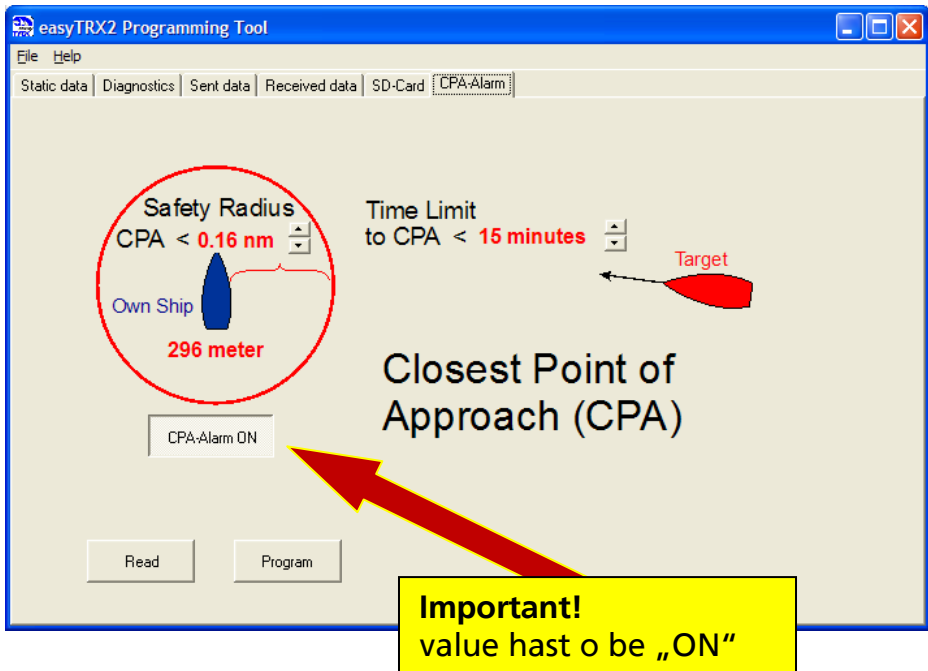


mounting template with hole position

### 3. STARTING UP

After you have connected the easyCPA-Alarm with the easyTRX2 or easyTRX2-IS as explained before you have to do the fine tuning.

Therefore you have to run the easyTRX2 software.  
An individual CPA-value has to be set



## Testing of easyCPA:

When you switch on the easyTRX2 /-IS there is the supply voltage on the easyCPA gate and you will hear a short beep. Also the LED is lightening up. So as you see it is very simple to test your connection. If it does not beep please check your wiring or switch on to "1"(ON).

## 4. TROUBLESHOOTING

Problem	Cause	Solution
easyCPA-Alarm does not work	Divice "off"	put the power switch on (1)
	Cables are not connected	Please check if the cable connection is correct. Brown to brown, white to white.
	Software is set on "CPA-Alarm off"	Change software into "CPA-Alarm ON"

## 5. MAINTANANCE

Unauthorized opening of the easyCPA-Alarm system will invalidate the warranty. Avoid using chemical solvents to clean the easyCPA-Alarm as some solvents can damage the case material. To clean, wipe down with a damp cloth. The easyCPA-Alarm contains no user serviceable parts. Contact your Service Agent for repair or for replacing.

## 6. CONTACT AND SUPPORT INFORMATION

Although WEATHERDOCK strives for accuracy in all its publications; this material may contain errors or omissions, and is subject to change without prior notice. WEATHERDOCK shall not be made liable for any specific, indirect, incidental or consequential damages as a result of its use. WEATHERDOCK components may only be used in safety of life devices or systems, with the express written approval of WEATHERDOCK, as the failure of such components could cause the failure of the WEATHERDOCK device or system. If these fail, it is reasonable to assume that the safety of the user or other persons may be endangered. Contact your local dealer for WEATHERDOCK AIS support.

Please see also our WEATHERDOCK Website: [www.easyAIS.com](http://www.easyAIS.com)

**Weatherdock AG**  
**Sigmundstraße 1807**  
**90431 Nürnberg**  
**Tel: +49 [0] 911-376638-30**  
**[info@weatherdock.de](mailto:info@weatherdock.de)**

## 7. WARRANTY

This Weatherdock product is warranted to be free from defects in materials or workmanship for 24 months from the date of purchase. Within this period, Weatherdock will at its sole option repair or replace any components that fail in normal use. Such repairs or replacement will be made at no charge to the customer for parts or labor, provided that the customer shall be responsible for any transportation cost. This warranty does not cover failures due to abuse, misuse, accident or unauthorized alteration or repairs.

THE WARRANTIES AND REMEDIES CONTAINED HEREIN ARE EXCLUSIVE AND IN LIEU OF ALL OTHER WARRANTIES EXPRESS OR IMPLIED OR STATUTORY, INCLUDING ANY LIABILITY ARISING UNDER ANY WARRANTY OF MERCHANTABILITY OR FITNESS FOR A PARTICULAR PURPOSE, STATUTORY OR OTHERWISE.

IN NO EVENT SHALL WEATHERDOCK BE LIABLE FOR ANY INCIDENTAL, SPECIAL, INDIRECT OR CONSEQUENTIAL DAMAGES, WHETHER RESULTING FROM THE USE, MISUSE, OR INABILITY TO USE THIS PRODUCT OR FROM DEFECTS IN THE PRODUCT.

Weatherdock retains the exclusive right to repair or replace the unit or software or offer a full refund of the purchase price at its sole discretion. Such remedy shall be your sole and exclusive remedy for any breach of warranty.

If you choose to use the Weatherdock products one or more in a boat, it is the sole responsibility of the owner to secure that the use of the products will not cause damage or personal injury in the event of an accident. It is the sole responsibility of the operator of the boat to operate the boat in a safe manner, maintain full surveillance of all boating conditions at all times, and never become distracted by the use of the Weatherdock products to the exclusion of safe operating practices.

**SOME VESSELS DO NOT CARRY AIS.**

**IT IS IMPORTANT AT ALL TIME TO KEEP A PROPER  
LOOKOUT.**

**THERE IS NO PRODUCT AS SUBSTITUTE FOR GOOD  
SEAMANSHIP**

## 8. INDEX

---

### **C**

Cable colours · 11  
Contact · 15

---

### **D**

designed to operate with · 7

---

### **G**

GENERAL WARNINGS · 2

---

### **H**

Hole mounting template · 12

---

### **I**

installation · 9

---

### **M**

Maintenance · 15  
**MMSI** · 2  
Mounting · 9  
mounting template · 12

---

### **S**

Schematics for the easyCPA-Alarm  
connection · 10  
Scope of delivery · 8  
starting up · 13  
system requirements · 7

---

### **T**

Troubleshooting · 14

---

### **W**

Warranty · 16  
Website · 16